

## LC adapters

### Description:

The innovative LC design offers a SFF - small form factor one-half the size of current industry standards, and simple features create a new definition of user-friendliness. The LC meet EIA/TIA 568A, FOCIS 10 and IEC 11801 specifications for optical performance and intermateability. The LC Duplex fits into the SC standard cutout. Two different versions are available:

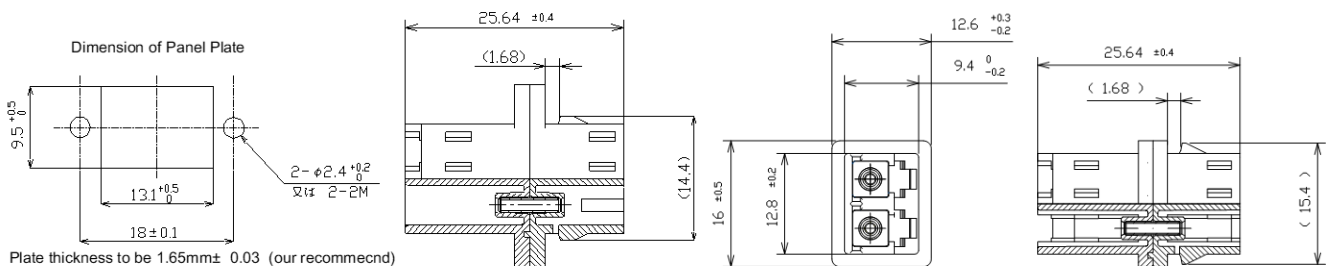
- Duplex adapters
- Quadruple adapters



### Features:

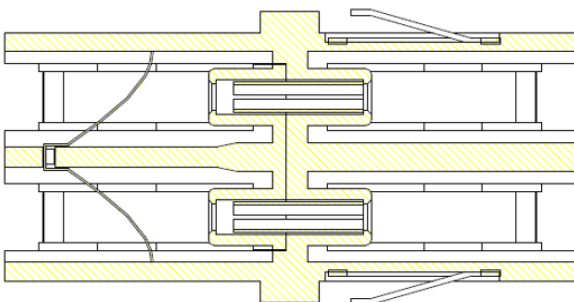
- SFF - small form factor
- Duplex fits SC footprint
- Increases panel density
- Duplex or quadruple design
- Adapter with shutter available

### Specifications:



A-LC-D/(A)PC-XX-03 XX

A-LC-D/(A)PC-XX-04 XX



LC duplex adapter with inner shutter

schematical view

A-LC-D/(A)PC-XX-05SI XX

## Samples of Adapters



A-LC-D/PC-01-04-BL



A-LC-D/APC-01-05-GR



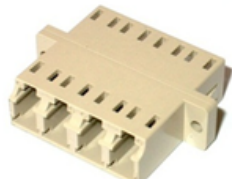
A-LC-D/PC-01-05-BL



A-LC-D/PC-02-03-BG



A-LC-D/PC-01-01-BL



A-LC-Q/PC-02-03-BG



A-LC-D/PC-01-05S-BL

### Application:

- Telecom
- LAN, WAN
- CATV
- Sensor systems
- Measuring Technique
- Utilities
- Railways

### Ordering code:

**A - LC (-D) / (A)PC - XX - XX XX**

type	
<b>LC -D</b>	duplex
<b>LC -Q</b>	quadruple

sleeve	
<b>01</b>	zirconia
<b>02</b>	phosphor bronze

body	
<b>01(S<sup>1</sup>)</b>	SC footprint with flange, metal clip
<b>05(S<sup>1</sup>)</b>	SC footprint without flange, metal clip
<b>03</b>	SC footprint with flange, plastic clip
<b>04</b>	SC footprint without flange, plastic clip
<b>BL</b>	blue (SM)
<b>GR</b>	green (SM-APC)
<b>BG</b>	beige (MM)

Note: 1) with shutter:

S outer shutter

SI inner shutter

LC® is trademark of Lucent Technologies, Inc.