

SMA adapters

Description:

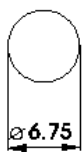
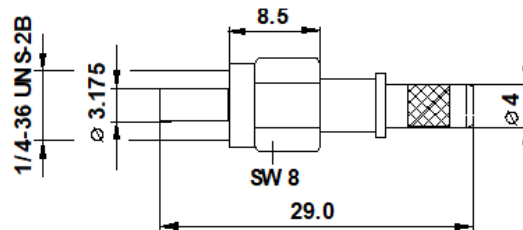
The SMA adapters are specially designed for multimode data communication applications. SMA adapters are fully compatible with existing SMA hardware.



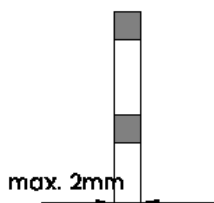
Features:

- One-Piece Design
- Suitable for field assembly
- Rugged
- Hybrid (SMA-ST) version available

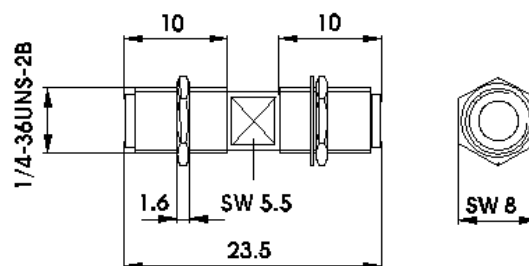
Specifications:



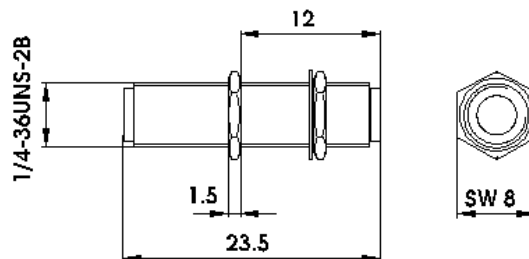
Mounting hole



Wall thickness



Adapter with continuous thread, 2 loose nuts and 1 washer



Adapter with 1 loose, 1 fixed nut and 1 washer



A-SMA-02-03



A-SMA-02-01



A-SMA-01-03



A-SMA-ST-02-03

Application:

- Local Area Networks (LAN's)
- Data processing networks
- Active device termination
- Premise installations
- Instrumentation

Ordering code:

A - SMA

- XX

XX

body

- 01 plastic
- 03 metal

mounting

- 01 - with continuous thread, 2 loose nuts and 1 washer
- 02 - with 1 loose, 1 fixed nut and 1 washer