

ST adapters

Description:

The ST adapters are offered in MM or SM performances, for connectors with PC polishing method. It is possible to exactly specify your demands of sleeve (polymer, phosphor bronze or zirconia) and adapter performance: metal or plastic.

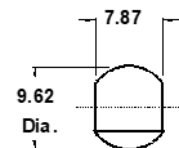
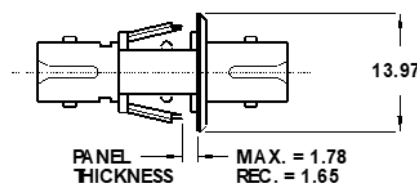


Features:

- Meets Bellcore GR-326 and TIA 568A performance standards
- Coupling body - zinc alloy, nickel plated or thermoplastic
- Threaded with nuts or snap-in coupling
- Dust caps

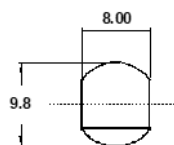
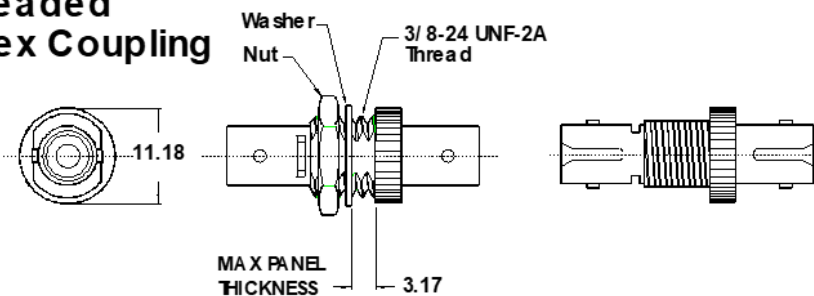
Specifications:

ST Snap-in Coupling



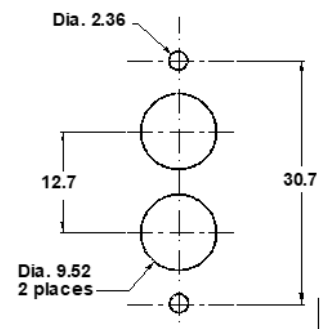
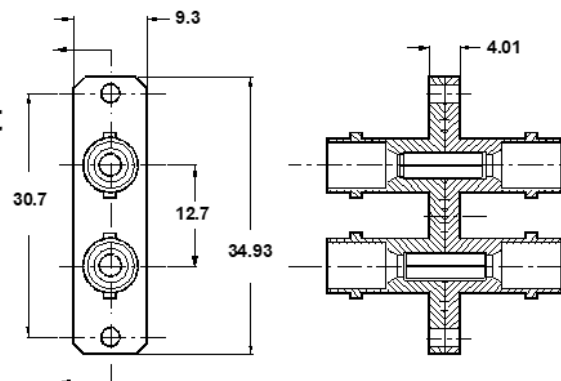
Recommended
Panel Cut-out
(minimum)

ST Threaded Simplex Coupling



Recommended
Panel Cut-out
(minimum)

ST Duplex Flange-mount Coupling



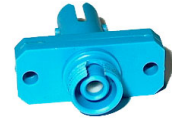
Samples of Adapters



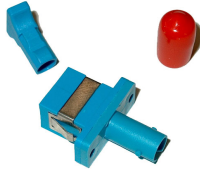
A-ST/PC-03-01-02



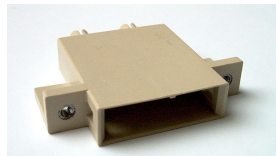
A-ST/PC-01-03-02



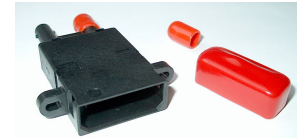
A-FC-ST/PC-01-01



A-SC-ST/PC-01-01BL-01



A-FDDI-ST/PC-01-1-M



A-ESCON-ST/PC-01-01-MM

Application:

- LAN, WAN
- Measuring Technique
- Utilities
- Railways

Ordering code:

A - ST (-D) / PC - XX - XX - XX

