

## PM-212-CWDM Pocket optical power meter USB probe

### Description:

The PM-212-CWDM optical power meter is a small, pocket size low cost item. The small size does not prevent the optical meter fulfilling all technical requirements for field equipment. The tester can be used as pocket power meter or as USB probe, part of testing workstation. The unit can be easily carried in the pocket or on the belt. It allows simultaneous measurement of full CWDM band with 2 extra wavelengths for MM applications (850 and 1300 nm) and 1625 nm for SM. The Li-Pol rechargeable battery ensures long term working time with a minimum life time of 2 years. The unit is able to store 100 measurements which can be uploaded to PC and managed with SmartProtocol software or Data Exporter.



### Features:

- Two functions:
  - - Portable power meter
  - - USB probe - accessory of Testing Workplace
- 18 channels CWDM + 850, 1300 and 1625 nm
- Small size, light weight
- Absolute and Relative optical power measurement
- Internal two level memory structure
- Capacity up to 100 measurements
- SmartProtocol SW - test reports creating
- Data Exporter - data download to Excel sheet
- USB port for:
  - - USB probe - full control via simple commands charging the battery
  - - data upload to PC
  - - firmware upgrade
- Build-in Li-Pol rechargeable battery pack
- Auto Off
- Battery status indicator

### Specifications:

Photo detector	1 mm InGaAs	
Working wavelengths	CWDM band (18CH, 1270 nm - 1610 nm) + 850, 1300 and 1625 nm	
Uncertainty	± 5%	
Resolution	0.01	
Dynamic range	-60 dBm to +10 dBm -53 dBm to +10 dBm	CWDM band; 1300 nm; 1625 nm 850 nm
Dimensions	24 x 47 x 71 mm	including 2.5 mm universal adapter



is a registered trademark of OPTOKON, a.s. Other names and trademarks mentioned herein may be the trademarks of their respective owners. OPTOKON, a.s. reserves the right to make changes, without notice, to the products described in this document, in the interest of improving design, operational function and/or reliability.

Weight	Less than 90 g	battery loaded
Temperature operating	-10 to +50 °C	
Temperature storage	-40 to +70 °C	
Humidity (non cond.)	0 - 95%	
Operating temperature	-10 to +50 °C	
Battery working time	> 35 hrs	between battery charging
Battery life time	> 2 years	

Compliant with RoHS-requirements (2002/95/EG, 27.01.2003)

### Standard accessories:

- Power meter
- Universal 2.5 mm input adapter (TE-ASP-250)
- Power charging adapter
- Traceable calibration certificate
- USB cable
- SmartProtocol SW
- Soft case
- Hard plastic case TE-HC-01



TE-HC-01 Hard carry case  
(265 x 270 x 90 mm)

### Options - changeable input adapters:

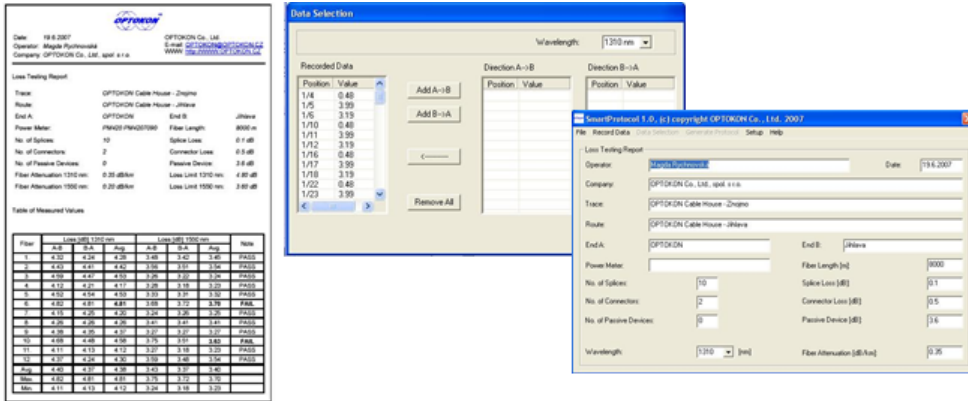


TE-ADP-FC TE-ADP-LC TE-ADP-SC TE-ADP-250 TE-ADP-125

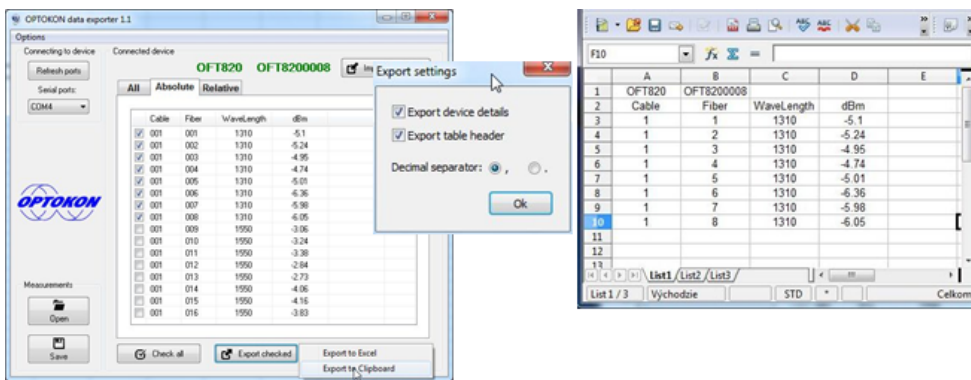
### Other types available on request:

TE-ADP-SC	SC adaptor
TE-ADP-FC	FC adaptor
TE-ADP-ST	ST adaptor
TE-ADP-DIN	DIN adaptor
TE-ADP-SMA	SMA adaptor
TE-ADP-LC	LC adaptor
TE-ADP-MU	MU adaptor

### SmartProtocol compatible (refer to TEQ\_02-07\_EN-SmartProtocol)



**DataExporter compatible (refer to TEQ\_08-13\_EN-DataExporter)**



**Application:**

- Optical components testing
- Optical networks measurement

**Ordering Code:**

**PM-212-CWDM + (options)**

standard CWDM tester