

# LC Connector

## Description:

The innovative LC design offers a form factor one-half the size of current industry standards, and simple features create a new definition of user-friendliness. The LC connector is manufactured to meet EIA/TIA 568A, FOCIS 10, IEC 61754-20 and CENELEC specifications for optical performance and intermateability. The LC Duplex fits into the SC single adapter standard cutout and uses the smallest diameter cable jacket in the industry. Connector design and boot size allows both cables diameter termination 2 and 3 mm and fiber type 0.9 mm. In addition to standard boot color, black or red boot color is available.

## Features:

- One-half the size of current industry standards
- Increases panel density – provides duplex connection in 50% less space
- Duplex fits RJ-45 footprint
- Available in SM, MM versions with standard, Ultra and Angle (APC) polishing
- User-friendly audible latch to indicate proper mating
- Simplex and duplex version available
- Pull – proof 1.6 mm simplex mini-cord, 1.8 x 3.6 mm duplex mini-zip cable

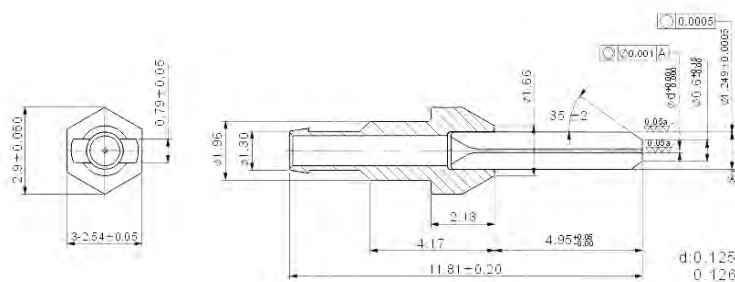
## Specifications:

Insertion loss (IL)	Typ.: 0.10 dB
Return loss (RL)	>60 dB for jumpers up to 3 m
Strain relief	Cable 2 and 3 mm: 90 N Fiber 0.9 mm: 5 N
Operating temperature	<b>-40 °C to +80 °C</b>
Durability	Min 1000 cycles
Assembly procedure	Glue and polish
Connection	Physical contact
Lock mechanism	Snap-on
Standards	ISO/IEC 11801, TIA 568A, IEC 61754-20, CENELEC
Ferrule material	Full ceramic zirconia
Connector material	Thermoplastic

## Application:

- Telecom
- LAN, WAN
- CATV
- Sensor systems
- Measuring Technique
- Utilities
- Railways

## Ferrule dimensions:



LC® is trademark of Lucent Technologies, Inc.

Ordering code:

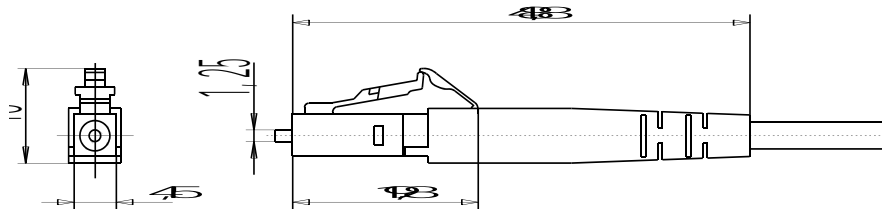
LC-(D) / (A)PC - XX - XX/(XX<sup>1</sup>) - XX - XX

<b>Connector type</b> LC LC connector LC-D LC duplex LC-DU LC uniboot dupl.connect.	<b>Color<sup>2</sup></b> BL Blue BG Beige GR Green	<b>Zirconia ferrule type</b> <b>Hole (µm)</b> Pre formed shape 5    125 6    126      C    Cone 7    127
<b>Connector style</b> MM Multimode SM Singlemode	<b>Boot type</b> 09 Fiber Ø 0.9 mm 20 Cable Ø 2.0 <sup>3</sup> mm 30 Cable Ø 3.0 mm UB Uniboot	

- Note: 1) Boot color – Please define if required different from standard: RD – Red, BK - Black  
 2) Standard color: Multimode – Connector beige, boot - white  
                           Single mode PC – Connector & Boot blue, APC - Connector & Boot green  
 3) Cable 2 mm fixation – Crimping ring

Typical application of zirconia ferrules:			
PC -	7C	hole Ø 127 µm, cone	
PC -	6C	hole Ø 126 µm, cone	
APC	5C	hole Ø 125 µm, cone	
			Cone

Connector dimensions:



Samples:



LC/PC-MM-BG-09-7C



LC/PC-MM-BG-20-7C



LC/PC-MM-BG-30-6C



LC/PC-SM-BL-09-6C



LC/PC-SM-BL-20-6C



LC/APC-SM-GR-20-5C



LC-D/PC-SM-BL-20-6C