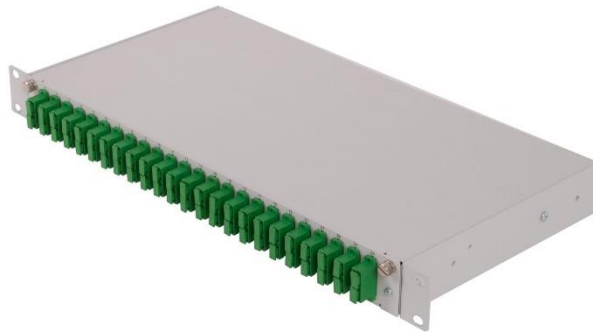


# TMVJ

## Rack mount cabinet with slide-out shelf

### Description:

The **TMVJ** Fixed Cabinet introduces a compact, low cost solution for fiber optic cable termination. The **TMVJ** series is ideal for rack-mounting in confined areas such as equipment enclosures where rack space is limited. The cabinet is equipped with slide-out shelf with splice tray holder. This allows easy access to the splicing area for optical network reconfiguration during operation and prevents damage to fibers prior to routing into adapters. The modular system allows splicing and termination up to 96 fibers in rack height 1U.



*TMVJ-1-48-DSC A-C4  
Base unit with patch panel for 24x DSC adapters*

### Features:

- FTTH use - holder for minicables or microtubes
- Designed for cable or microtubes termination
- Compact robust design
- Slide-out shelf provides unrestricted access
- Changeable front panel, various adapters
- Coupling adapters mounted on the face panel
- Accommodates up to 96 fibers in 1 rack unit
- Durable powder coat finish
- Cable strain-relief and grounding provisions
- Accepts the industry's most common connector types
- Durable powder coat finish light grey colour (RAL 7038), optionally black colour (RAL 9005)
- Material-Aluminium alloy - low weight and shipment costs

### Technical specifications:

PART NUMBER	FIBER CAPACITY		RACK UNITS	DIMENSIONS (HxWxD) mm	SHIP WGT (kg)
	FT-12-XX	FT-24-XX			
<b>TMVJ – 1</b>	12 (24) <sup>1</sup>	24 (48, 96) <sup>1</sup>	1	44 x 432 x 221	1.4

*Note: 1) Fiber capacity is valid for SFF connector types, double capacity for duplex adapters (DLC, DSC, QLC)*

Coupling panels FT series available for the common used connector adapter types in following configuration:

**FT-12-XX** 12 pcs ST, FC, SC, DSC, DLC, QLC, E2000, ... adapters  
**FT-24-XX** 24 pcs ST, FC, SC, DSC, DLC, QLC, E2000, ... adapters

### Applications:

- Rack-mount
- FTTH networks
- Customer premise remote cable drop

**Product information and specifications:**



**TMVJ-1-24-DLCF S-C-2/PGR RAL 7038**  
Internal layout – DLC/PC patch panel and 2 splice cassettes



Empty **FT-24-DSC** front panel

Standard front panels:	
<b>FT-12-DSC</b>	12x duplex SC adaptors
<b>FT-24-DSC</b>	24x duplex SC adaptors
<b>FT-12-SC</b>	12x single SC adaptors
<b>FT-24-SC line</b>	24x single SC adaptors in-line
<b>FT-24-SC zigzag</b>	24x single SC adaptors zigzag
<b>FT-12-ST(FC)</b>	12x single ST (FC) adaptors
<b>FT-24-ST(FC)</b>	24x single ST (FC) adaptors
<b>FT-24-DE2</b>	24x duplex E2000 adaptors

**Ordering code:**

<b>TMVJ-X(B<sup>1</sup>)</b>	-	<b>XX</b>	-	<b>XX(F<sup>2</sup>) X</b>	-	<b>CX / (xPGy<sup>3</sup>) / (G<sup>4</sup>)</b>
<b>Version - X</b> Rack Unit <b>1</b> 1U		<b>Fiber Capacity</b> <b>1 ÷ 96</b> fibers		<b>Coupling Type - XX</b> <b>ST</b> ST <b>SC(F)</b> SC <b>FC</b> FC <b>E2(F)</b> LSH (E2000) <b>DE2(F)</b> Duplex LSH <b>DSC(F)</b> Duplex SC <b>DLC(F)</b> Duplex LC <b>QLC(F)</b> Quadruplex LC		<b>Splice Trays</b> <b>X: 0 ÷ 4</b>

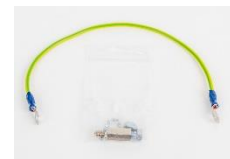
Note:

- B** - Black colour (RAL9005)
- F** - Fixed adaptors by screws
- PG** - Option for cable glands PG 13.5:  
 $x$  – Number of holes for PG (standard=2)  
 $y$  - **R** (Right) or **L** (Left) => only one PG on R or L side from the front view
- G** - Grounding option – Protection grounding wires installed with grounding

<b>Application - X</b>	
<b>M</b>	Multimode
<b>S</b>	Singlemode
<b>A</b>	APC



Plastic cable gland PG 13.5



Grounding accessories



TMVJ-1B-24-DLC S-C-2 front view (RAL 9005)



TMVJ-1 with 4 holes (4PG) - back view (RAL 7038)