

MOMB series

Outdoor metal fiber optic box, IP66

Description:

The OPTOKON **MOMB** metal box is designed for optical fiber cables termination outdoors. It is an IP66 design that resists moisture and dust entry. A single door box with lock is provided. Provision for up to 4 optical fiber cables to enter or leave the enclosure through weatherproof cable glands is provided. Four cable anchoring points are provided. The **MOMB** includes a set of individually removable splice trays according to the customer request; each tray can accept 12 fusion splices. The splice tray stack is secured by a long length hook and loop tie. The housing contains standard CNPM coupling panels with connector adaptors of all most industry used standards.



MOMB-1-12-DSC M-C1

Features:

- Easy installation – fully removable base
- Compact FTTH design
- Designed to house SC, SC duplex, ST, FC, E2000, DLC couplings
- Metal wires and FO hybrid version available
- Pigtail cable entry available
- Wide range of cable size entry
- Pole mount accessories on request
- Inside fiber bending with observance of diameters, fiber reserve provided.

Specification:

PART NUMBER	FIBER CAPACITY ¹	CASSETTE NUMBER	DIMENSIONS (H x W x D) mm	SHIP WGT (kg)
MOMB-1	up to 48 fibers	4	300 x 200 x 155	4.5
MOMB-2	up to 120 fibers	up to 10	400 x 300 x 210	8.0

Note: 1) Fiber capacity depends on connector adaptor type, e.g. in the case DSC and DLC it is double capacity (If we use slimmer splice protections P-B-40 so we can place two splices to one groove in the splice holder).

Environmental protection	IP66
Temperature resistance	long-term: -40°C to +80°C; short-term: -60°C to +160°C
Material	Sheet steel (Stainless steel - optionally)
Color	RAL7035
Lock	Standard: Double-bar lock insert

Standard accessories:

Main body + bottom cable panel + cable glands²
Lock
Splice cassettes (according to fiber number)
Splice protection sleeves (according to fiber number)
Coupling adaptors (according to order)
Cable holders

Optional accessories:

Glass door
Pole-mounting accessories (2 mm stainless steel)
Wall-mounting brackets (3 mm stainless steel)
Roof against the rain
Inner mounting rails
Grounding kit
Door stop
Pocket for documents

Note: 2) Standard cable input
 2x PG13.5 Ø cable 5.5-12 mm
 1x PG21 Ø cable 8.5-14 mm
 Customer solution on request

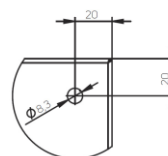


Ordering code:

MOMB-XX		-	XX	-	XX X	-	XX
Version		Fiber Capacity		X - Fiber Termination Option			
MOMB-1		1-120 fibers		C Splice Cassette for 12 Splicing			
MOMB-2		X - Number of Splice Cassettes				1-10 Number of Splice Cassettes	

Coupling Type			
ST	ST	M	Multimode
SC	SC	S	Singlemode
FC	FC	A	APC
E2	LSH (E2000)		
DSC	Duplex SC		
DLC	Duplex LC		
QLC	Quadruplex LC		

Detail of mounting holes



Rear wall with hole placement



Roof against rain



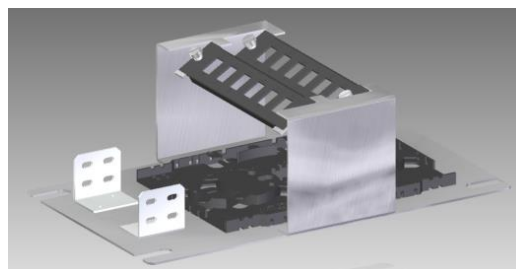
*Pole-mounting accessories
(ID-W-MPx)*



*Wall-mounting brackets
(ID-W-WB)*



MOMB-2-24-SC S-C2



Detail of inner equipment MOMB-1