

HE-XX series IP67 connector - patchcord

Description:

The OPTOKON introducing new effective low cost harsh environment connectors HE-XX series which are designed for Industrial networks, FTTH (Fiber to the Home), FTTA (Fiber to the Antenna), or any other harsh environmental projects. Pre connectorized cables significantly reduce cable installation time, saving money and accelerating FTTH subscriber connections.



HE-MTP patchcord

- Bulkhead panel mount or In-line adapters
- Robust design keeps connector intact during installation

Note: 1) Protection against dirt and moisture is ensured in the connected state. When disconnecting, it is necessary to protect the connector against the adverse effects of external influences.

Features:

- Simple bayonet locking system
- IP67 protection for harsh environment
- Low Insertion Loss
- Proven design provides a hardened connector for outside plant deployment¹
 - Single mode/Multimode
 - SC, LC duplex, MTP connector
 - Connector is designed to install on Cable
 - Environmentally-sealed connector housing permits rapid connection to external flush-mounted bulkhead adapter
- Dust cap included

Specifications:

Insertion Loss	HE-LC series: 0.2 dB typical
Return loss	SM: > 50 dB typical for PC, MM: > 30 dB
Ferrule material	full ceramic zirconia
Assembly procedure	glue and polish
Connection	physical contact
Lock mechanism	bayonet locking system
Operating temperature	-40°C to +70°C
Durability	min 500 cycles (<0.2 dB typical change)
Standards	EN 61076-3-106, cable conforms to the requirements of STANAG 4290
Environmental protection	IP67

Connector variants:



HE-ULCD connector



HE-MTP connector

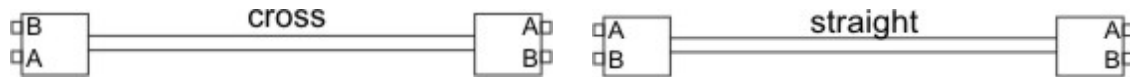


Ordering Code:

HE-AAA	CCC FFF	XX - (L2) - LLL
Connector type¹ HE Plug (connector) AAA: Connector type Duplex LC connector LCD LC/PC (Multimode) ULCD LC/UPC (Single mode) NLCD LC/APC (Single mode -angled) xxx¹ SC, USC, NSC, MTP, NMTP	CCC – Cable type LD2 Tactical cable 2 fibers D8 Duplex 2.8 x 5.5 mm FF – Fiber type OM1 MM 62.5/125 μm OM2-4 MM 50/125 μm S2D SM G.652D S7A1 SM G.657A1	Cable length L, (L2) Length (m) Cable type P Pigtail JC Jumper crossed ² JS Jumper straight

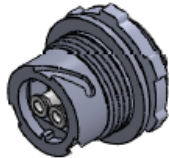
Note: 1) Other type (SC, MTP) on request, see relevant patchcord datasheet
2) JC-crossed is standard, straight on request

Crossed – straight connection:

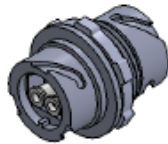


Adapters:

HE - XX	XXX	XX	XX
XX: type BN Bulkhead BI In-line	XXX: adapter LCD Duplex LC SC SC adapter MTPO⁴ MTP adapter	XX: sleeve 01 zirconia 02 phosphor bronze XX not applied	XX: color³ BL blue GR green BG beige BK black AQ aqua



HE-BN-LCD type

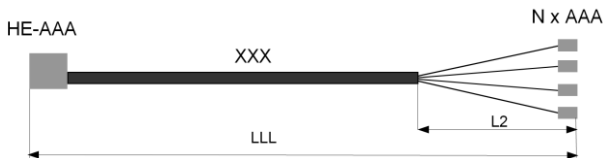


HE-BI-LCD type

Note: 3) inside adapter
4) MTPx adapter key orientation: MTPO – opposed type only

Dust cap:
HE-CP Dust cap – connector type
HE-CA Dust cap – adapter type

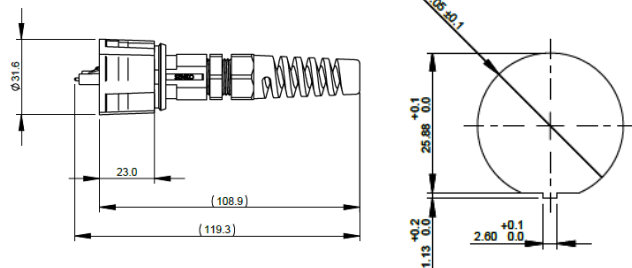
Fan-out cable:



Dimensions:

Connector

Adapter cut-out



Applications:

HE-ULCD-LD2 S7A1-JC-010
 HE-ULCD-2xUPC-LD2 S7A1-JC-0.5-003
 HE-BN-LCD-01-BL
 HE-BI-LCD-01-BL

HE-ULCD cross cable, HE IP67 connectors, LD 2 fibers S7A1, 10 m fanout cable, HE-ULCD to 2x FC/PC connectors, LD 2 fibers S7A1, 3 m bulkhead with duplex LC adaptor, Zirconia sleeve, SM, blue in-line with duplex LC adaptor, Zirconia sleeve, SM, blue