

PM-800-G optical Power Meter

The PM-800-G is a members of OPTOKON test equipment family designed for thorough fiber optic line diagnostic. Both are designed to measure absolute or relative optical power in optical networks. It can be used as portable power meter or as a USB probe. The changeable adaptor design allows the simple exchange of optical connectors according actual need.

Automatic wavelength detection

Automatic wavelength detection (AWD) mode allows using OPTOKON Light source and Power meter without manually switching the measured wavelength and decreases the possibility of faulty measurement.



Features:

- Portable Power Meter
- InGaAs or Si photo detector
- Absolute and Relative optical power measurement
- CW, 270 Hz, 1 kHz, 2 kHz modulation
- Auto Wavelength Detection (AWD) function
- Changeable input adaptors
- USB probe mode
- Two levels high capacity memory

Standard accessories:

- Power meter
- Changeable input adaptors
- USB cable
- Li-Pol battery
- Power charging adapter 5 V DC
- Calibration certificate
- Hard carrying case
- Smart Protocol PC software
- Data Exporter PC software

Input adaptors:



TE-AGP-FC
FC adaptor



TE-AGP-ST
ST adaptor



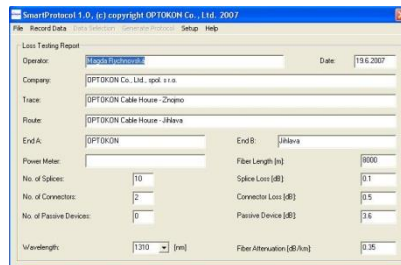
TE-AGP-SC
SC adaptor



Universal input 2.5 mm ferrule
without any adaptor

Application:

- Link Loss testing
- Measurement of optical power
- Output power of transceivers
- Fiber Detection
- Continuous fiber testing
- Signal detection
- USB probe



Date:		19.8.2017		OPTOKON Co., Ltd.	
Operator:		Marek Procházka		E-mail: info@optokon.cz	
Company:		OPTOKON Co., Ltd. spol. s r.o.		WWW: www.optokon.cz	
Loss Testing Report:					
Trace:	OPTOKON Cable House - Znojmo				
Route:	OPTOKON Cable House - Jihlava				
Start A:	OPTOKON				
End B:	Jihlava				
Power Meter:	PM800-FIBER2000	Fiber Length:	8000 m		
No. of Splices:	10	Splice Loss [dB]:	0.1 dB		
No. of Connectors:	2	Connector Loss [dB]:	0.5 dB		
No. of Passive Devices:	0	Passive Device Loss [dB]:	3.6 dB		
Fiber Attenuation [dB/km]:	0.20 dB/km	Loss Limit [dB/km]:	4.00 dB		
Fiber Attenuation [dB]:	0.20 dB/km	Loss Limit [dB]:	3.60 dB		
Table of Measured Values:					
Fiber	Loss @ 1310 nm		Loss @ 1550 nm		Units
1	4.88	0.24	4.78	0.24	PASS
2	4.93	0.24	4.72	0.24	PASS
3	4.84	0.24	4.72	0.24	PASS
4	4.52	0.24	4.17	0.24	PASS
5	4.92	0.24	4.51	0.24	PASS
6	4.82	0.24	4.81	0.24	PASS
7	4.78	0.24	4.52	0.24	PASS
8	4.28	0.24	4.20	0.24	PASS
9	4.28	0.24	4.20	0.24	PASS
10	4.68	0.24	4.20	0.24	PASS
11	4.71	0.24	4.12	0.24	PASS
12	4.82	0.24	4.20	0.24	PASS
13	4.78	0.24	4.20	0.24	PASS
14	4.82	0.24	4.20	0.24	PASS
15	4.82	0.24	4.20	0.24	PASS
16	4.82	0.24	4.20	0.24	PASS
17	4.71	0.24	4.20	0.24	PASS
18	4.71	0.24	4.20	0.24	PASS

Technical specifications:

General specifications	Value				Unit	Note
Dimensions	165 x 80 x 40				mm	with TE-AGP-250 adapter
Weight	340				g	with battery
Operation temperature	-10 to +60				°C	charging battery 0 to +45
Storage temperature	-40 to +70				°C	Li-Pol battery -10 to +45
Humidity (non-condensing)	0 to 95				%	
Power Meter	PM-800-06	PM-800-16	PM-800-26	PM-800-36		
Dynamic range	-70 to +6	-60 to +16	-50 to +26	-40 to +36	dBm	
Detector	InGaAs		Si			
Wavelength range	850 to 1700		400 to 1100		nm	
Working wavelengths	850, 1300, 1310, 1490, 1550, 1625		650, 850, 980		nm	can be customized
Accuracy	± 5				%	1310, 1550 nm at -20 dBm
Resolution	0.01				dB	
Tone detection	0.270, 1, 2				kHz	
Auto switching (AWD)	Yes				-	
AWD/Modulation Detection	-50 / -45				dBm	1300 – 1625 nm / 850 nm
Data storage	Up to 3000				-	number of measurements
Display units	dBm, dB, W				-	

Ordering code:

PM-800	-	XX	-	XX	-	(SI)
		Dynamic range		Adaptor type		Photodetector
		06 -70 to +6 dBm		G 2.5 ¹ , FC, SC, ST		- InGaAs
		16 -60 to +16 dBm				SI Si
		26 -50 to +26 dBm				
		36 -40 to +36 dBm				

Note: 1) tester without additional adapter is suitable for ferrule 2.5 mm



PM-800 without additional adapter, suitable for 2.5 mm ferrule



TE-HC-03

Typical configuration:

- PM-800-16-G** dynamic range -60 to +16 dBm, InGaAs photodetector
- PM-800-26-G** high power dynamic range up to +26 dBm, InGaAs photodetector
- PM-800-16-G-SI** dynamic range -60 to +16 dBm, Si photodetector